

WILLAMETTE VALLEY
GENEALOGICAL SOCIETY
NEWSLETTER

Volume XLIV Number 3 Salem, Oregon

March 2022

President: Elizabeth Tice—503-363-0880—email: eliztice@comcast.net
Newsletter Editor: Elizabeth Tice—503-363-0880—email: willvgs@yahoo.com
WVGS Web Site <http://www.wvgsor.org> Facebook: www.facebook.com/wvgsor

Willamette Valley Genealogical Society Meeting Day!

- Time: March 12, 2022, 10:30 am to 1 pm
- Place: Veterans of Foreign Wars Building, 630 Hood St NE, Salem, Oregon
Park in the parking lot across the street on Hood Street.
The entrance has stairs, but there is a ramp on the west side.

- 10:30 am – 11:45 am General Membership Meeting.
A business meeting will be held to conduct society business.

12 noon – 1 pm Program: Members “Show and Tell-Family Heirlooms”

Members should bring photos, family heirlooms, or documents and share their stories. It will be a show-and-tell session, when precious heirlooms and artifacts tell your family story. It’s also a chance to get help with that mysterious item you found in grandma’s attic but aren’t quite sure about. Chances are, someone in the room will be able to shed some light. Five to ten minute talk on the item you bring.

WVGS programs are always open to the public.

There will be a Board meeting on Thursday March 10th, 2022 at 11:30 at the Veterans of Foreign Wars Hall, 630 Hood St NE, Salem, Oregon. Members are welcome.

Salem Public Library <https://www.cityofsalem.net/library>
<https://www.facebook.com/spl.oregon>

Salem Public Library’s catalog is online on the library’s catalog at
https://catalog.ccrils.org/client/en_US/spl/

Salem Public Library's Main Library, 585 Liberty ST SE, is open 11 a.m.-6 p.m. Tuesday-Saturday. Masks worn over the mouth and nose are required at all times inside the library.

WVGS Genealogy Volunteers are back!!

Come visit our volunteers at the Genealogy Desk at Salem Public Library. We have volunteers from 11 am to 5 pm on days that the library is open, Tuesday to Saturday. Volunteers are there to help patrons for free with their genealogy questions. This includes members! Access to Ancestry.com, newspapers.com and other sites. We also are working on a Volunteer Specialty List—see page 3.

Membership for 2022

All members of WVGS as of December 31, 2021 had their membership extended to December 31, 2022. For 2022 only, new members can join at no cost!! Let your fellow genealogists know. Our online form for new members is at www.wvgsor.org

This does not include the additional \$10.00 fee (an increase due to increase in postage) for a hard copy of Beaver Briefs. If you wish to receive Beaver Briefs through the US mail, you will still need to fill out the form on page 7 and send a check or cash to WVGS.



WVGS Information

MEMBERSHIP REPORT By Suzan Rempel

Membership as of February 19, 2022 was 2 societies, 21 Life Members, 139 single memberships, and 18 family memberships (36 individuals) for a total of 198 members. We now have an online membership form. Welcome all new members!

Newsletter

We send newsletters to our members and exchange societies **by email** from our Yahoo email account (willvgs@yahoo.com).

If any member would prefer a hard copy, please let me know. Or if we don't have your e-mail and you're willing to get your newsletter by e-mail, let me know your e-mail address. The same is true for our exchange societies and complimentary newsletters.

We also are emailing the **Beaver Briefs** to members. If you want a hard copy, the cost is still an additional \$10.00 for postage. **Beaver Briefs** can be accessed by members on our website under Member Page with a password. If you need your password, contact Liz Tice.

Meeting Dates for 2022

January 8	July 9
February 12	August 13
March 12	September 10
April 9	October 8
May 14	November 12
June 11	December 10

WVGS Officers for 2022

Elected Officers

President: *Elizabeth Tice*
 1st Vice-President (Program): *Doug Crosby*
 2nd Vice-President (Membership): *Suzan Rempel*
 Recording Secretary: *Sally Broadwater*
 Corresponding Secretary: *Julianne Kennedy*
 Treasurer: *Barbara Foster*

Appointed Positions

Newsletter Editor: *Elizabeth Tice*
 Beaver Brief Editors: *Dennis Hill & Craig Smith*
 Librarians: *Deanne Smith*
 Volunteer Coordinator: *Craig Smith*
 Publicity:
 Webmaster: *Dennis Hill*
 Periodicals: *Jerry Rodgers*

WVGS subscribes to various websites and publications for our members. Please contact us if you would like to use these research sources.



WVGS FUNDRAISERS Help support our Genealogical Society when you shop!!

Earn a donation for WVGS from Fred Meyer every time you shop and they scan your Rewards card. Go online and link your Rewards card to Willamette Valley Genealogical Society in your Fred Meyer Rewards account. The donation does not affect the rewards that you earn.



AmazonSmile is exactly the same as shopping on the Amazon site. The added bonus is that Amazon donates 0.5% of qualified purchases to a charity of your choice. Please choose Willamette Valley Genealogical Society. Use your Amazon login and password at AmazonSmile.





WVGS News

President's Report for February by Liz Tice, President

We are happy to be meeting in person! We plan on returning to Salem Public Library for our meetings but for the near future we will continue meeting at the VFW Hall with a big thank you to member Kerry Wymetalek for allowing us to meet there. The good news is there are now 3 hours of free parking at the Library Parkade! Thank you to our volunteers for all coming back! We now have volunteers working Tuesday through Saturday, 11 am to 5 pm.

We now have a secure website (https) so members will be able pay dues for 2023 online through PayPal. Payments for research, publication sales and donations will also be able to paid online. We don't have PayPal set up yet though.

Barbara Foster, our treasurer, has completed the 2021 Treasurer's Report. We ended the year with \$31,068.96, down from a beginning balance of \$33,387.65 due to not charging dues this year. Our biggest money-maker was research. Tony Hoff filed a report for 2021. We collected \$1922.90 for research in 2021. New Corresponding Secretary Juli Kennedy reported that January 2022 was slower but we continued to have requests. Our largest expense for 2021 was for rent at Candalaria Terrace. We paid \$4,130.52 in rent to keep our collections. Rent has increased this year by a little over \$10 a month.

I also want to welcome new members Gail Gutzler, Margaret Burden and Emily Markus, all of Salem. Also Steve Holgate and wife Felicia (added as a family).

We received a new agreement from the City of Salem but had some suggestions for changes so we are waiting for a response.

Our Surname File Cabinet has been moved up from the basement in the library to our area on the main floor. We are working on an updated list and information about these materials, in hopes that it will get used. Craig Smith and Dennis Hill did a great job on the first issue of Beaver Briefs this year, which was sent out on time!. Color for the print copies is too expensive so it will continue as is, but the pdf copies sent to members is in color, thanks to Dennis.

We really need a Public Relations officer. Please consider volunteering.

We are also very sad at the passing of Program VP, Doug Crosby's wife, Mary Jane.

We have a volunteer who could help you with these topics. Come visit our desk at Salem Public Library.

[Introduction to Genealogy](#)
[Writing Family History](#)
[Massachusetts Bay Colony](#)
[Newspaper search](#)
[Locating newspaper obituaries](#)
[Military research](#)
[Civil War Research](#)
[Oregon History](#)
[U.S. History](#)
[Digital Books](#)
[City Directories](#)
[Oregon Government](#)
[State of Oregon Library](#)
[Maps and Photographs](#)
[Scanning](#)
[New England Historic Genealogical Society](#)
[Canada records](#)

[Mayflower Society](#)
[DAR](#)
[Greek!](#)
[French language](#)
[Oregon cemeteries](#)
[Southeast States: Georgia, N & S Carolina](#)
[No. California: Scott Valley & Ft Jones](#)
[Germans from Russia](#)
[French Canadian](#)
[Polish research](#)
[Starting a genealogy tree](#)
[Ancestry.com including DNA](#)
[Helping with different computer items](#)
[Germany and Bohemia esp Prauge \(Czech Republic now\)](#)
[General research -ancestry, google, Family Search, newspapers, obituaries](#)
[1950 Census](#)
[Mayflower](#)
[Lancaster, PA Mennonite Historical Society](#)
[Help with finding local sources & road trips](#)



State Censuses



State Censuses

(This series was started in 2018 up until May 2020, but was not finished in the newsletters. The complete list was published in Beaver Briefs.)

SOUTH CAROLINA State and colonial censuses

South Carolina took censuses in the years between the federal censuses. The dates are listed below. State census records may have columns that were different or more unusual than those found on federal censuses. The responses and years of coverage may give additional information on the family.

South Carolina state and colonial censuses. No State Census found after 1875.

1875 Agricultural and population returns complete in Clarendon, Newberry, and Marlboro counties; partially complete in Abbeville, Beaufort, Fairfield, Lancaster, and Sumter counties.

1869 State population returns. Missing in Clarendon, Oconee, Spartanburg counties.

1868 Agricultural returns only.

1861 City of Charleston, 1848 City of Charleston.

1839 State census only for Beaufort, Chesterfield, Kershaw, and Lexington districts.

1829 State census only for Fairfield and Laurens districts.

Family History Library Collection

"1829 Census of Laurens District," *The South Carolina Magazine of Ancestral Research*, Vol. 4, No. 2 (Spring 1976):103-113; Vol. 4, No. 3 (Summer 1976):139-151. FHL Book

"The 1839 State Census of Lexington District," *The South Carolina Magazine of Ancestral Research*, Vol. 25, No. 3 (Summer 1997):137-143. FHL Book

"The 1839 State Census of Beaufort District," *The South Carolina Magazine of Ancestral Research*, Vol. 36, No. 3 (Summer 2008):139-143; Vol. 36, No. 4 (Fall 2008):193-195; Vol. 37, No. 1 (Winter 2009):29-31; Vol. 37, No. 2 (Spring 2009):89-91; Vol. 38, No. 2 (Spring 2009):89-91. FHL Books.

SOUTH DAKOTA State and colonial censuses

South Dakota often took censuses in the years before and between the federal censuses, the dates are listed below. State census records may have columns that were different or more unusual than those found on federal censuses. The responses and years of coverage may give additional information on the family.

South Dakota (Dakota Territory 1861-1889) state censuses

1945 Exist; 1915 Exist; 1935 Exist; 1905 Exist; 1925 Exist

1895 Exist for only the counties of Beadle, Brule, Pratt (now Jones), Presho (now Lyman), Campbell, and Charles Mix.

1885 a Federal census of Dakota Territory.

Ancestry.com

South Dakota, Territorial Census, 1885

South Dakota, State Census, 1895

South Dakota, State Census, 1905

South Dakota, State Census, 1915

South Dakota, State Census, 1925

South Dakota, State Census, 1935

South Dakota, State Census, 1945

FamilySearch

South Dakota, State Census, 1905

South Dakota, State Census, 1915

South Dakota, State Census, 1925

South Dakota, State Census, 1935

South Dakota, State Census, 1945

Indian Census Rolls Family History Microfilm

Supplemental census, births and deaths, 1946-1948; Indian census rolls, Crow Creek, 1886-1942; Census of Yankton Reservation, 1931, Tribal census, 1886-1942; Indian census rolls, 1910, 1911, 1921, 1924; Indian census rolls, Yankton, 1885-1931; Register of Lower Yantonai Sioux families, ca. 1901; Indian census rolls, Santee, 1885-1917; Tribal census of the Lower Yantonai Sioux, 1895-1940; Tribal census, 1877; Indian census rolls, Flandreau, 1892-1939; Census records, 1876-1939; Lists of males over 18 years of age, 1889; Census records, 1874-1932; Indian census rolls, Cheyenne River, 1886-1942

For more information see:

https://www.familysearch.org/wiki/en/South_Dakota_Census



Online



Online

Registration
Now Open



The world's largest family history

rootstech

Registration is now open for RootsTech 2022, the largest family history event in the world. The annual event, sponsored by [FamilySearch](#), is being held online March 3-5, 2022.

RootsTech offers a forum where people of all ages across the globe are inspired to discover and share their memories and make meaningful connections. Register for free at [rootstech.org](#) today. RootsTech 2022 will be a virtual-only experience, with some enhancements and improvements.

The 10 Hard Truths Every Family Historian Must Learn

1. Not every record is online.
2. Other people's trees are not valid sources.
3. Citing your sources is not optional.
4. Not all of your family's stories and assumptions are true.
5. One single database will not provide all the answers you need.
6. You will make mistakes in your research.
7. You will hit brick walls.
8. Technology doesn't solve every genealogical problem.
9. Original records will contain errors.
10. You are never "done" tracing your roots.

Read the complete article from Family History Daily at <https://familyhistorydaily.com/genealogy-help-and-how-to/hard-truths-family-historian/>



THE UNIVERSITY OF BRITISH COLUMBIA

Library

- [Library Home](#)
- [Search Collections](#)
- [Hours & Locations](#)
- [Use The Library](#)
- [Get Research Help](#)
- [About Us](#)
- [Ask Us!](#)

[Library Home](#) / [Search Collections](#) / [Open Collections](#) / [Browse Collections](#) / [BC Historical Newspapers](#)

Open Collections



BC Historical Newspapers



Online Seminar
Finding Irish Origins: A County is Not Enough!

When locating Irish ancestors, knowing their county of origin is not enough—you also need the townland and parish. Discovering that information can be the biggest challenge in Irish family history research. This online seminar will help you navigate records, provide strategies for when records fall short, and demonstrate how DNA can help. March 19 at 2 p.m. (ET). [Register Now](#)

Americanancestors.org



1950 Census



Research



In 2 short months, the 1950 US census will be released and made available through FamilySearch!

Here are 3 things you can do to be ready:

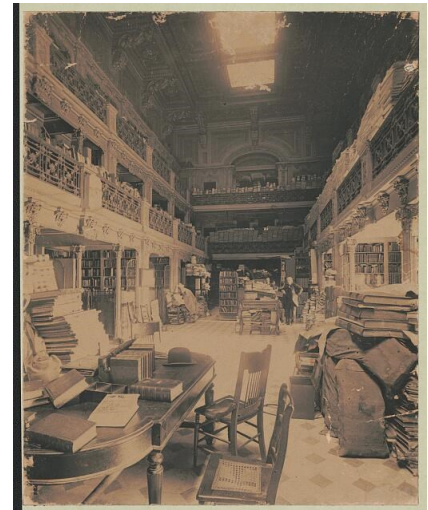
- **Join us at RootsTech!**
Attend [RootsTech](#) to learn more about the 1950 US census. You can also learn about the new FamilySearch *Get Involved* app. See how indexing the census will be a [new and innovative experience](#).
- **Find Your Family in the 1950 US Census!**
Use the FamilySearch Family Tree or another family tree service to identify which of your family members will be included in the 1950 census. [Learn how to find your family in 1950 on FamilySearch](#).
- **Spread the Word!**
Spread the word about the 1950 US Census Community Project with our [downloadable materials](#).

WVGS is often contacted by families who want to donate a deceased ancestors' research materials. We do not have space to store materials! And I feel that eventually a descendant will be very happy to receive the materials. Here's an article from Family History Daily that addresses that.

The Simple Steps to Take When You Inherit Family History Research

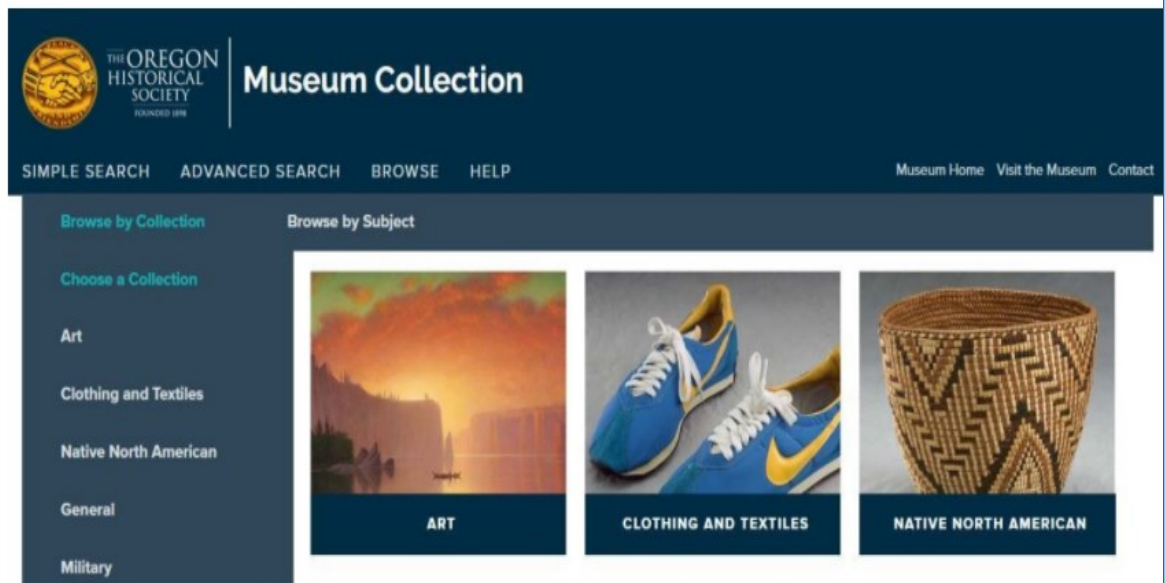
<https://familyhistorydaily.com/genealogy-help-and-how-to/inherit-family-history-research/>

- Step 1: Employ caution
- Step 2: Organize your inheritance
- Step 3: Evaluate and integrate



Director's Corner: Introducing the OHS Museum Collection Portal, A History Spotlight from OHS Executive Director Kerry Tymchuk

This is an exciting week for OHS, as this past Tuesday, we officially launched our Museum Collection Portal — a public, online database highlighting the incredible objects in the museum's care! The launch of this powerful new tool aligns with OHS's mission to make history accessible to everyone and gives curious individuals the chance to essentially peer into our 100,000 square foot Oregon Vault, where our museum team stewards over 75,000 objects that document the history of the region. At launch, the Portal shares records for 10,000 of these objects (with new records being added regularly), which include clothing and textiles, Native American belongings, artworks, vehicles, equipment, and everyday items.





Willamette Valley Genealogical Society Membership Application
 Revised September 2021, valid through December 31, 2022

Mailing Address:

Willamette Valley Genealogical Society
 P. O. Box 2083, Salem, OR 97308-2083
 Email: willvgs@yahoo.com

For more information:

WVGS Web Site Address: <http://www.wvgsor.org> Facebook: www.facebook.com/wvgsor

The **Willamette Valley Genealogical Society** was organized in December 1968, to create and foster the study of family history, to aid in the publication of local history, and to aid in the establishment of materials in local genealogical library collections. It is an Oregon Non-Profit corporation, and was determined by IRS to be a 501 (c) (3) organization. Your donations may be federal tax-deductible.

WVGS MEMBERSHIP APPLICATION Please if this is a **NEW** or **RENEWAL** membership

Name _____

Address _____

City _____ State _____ Zip _____

Phone _____ email: _____

May WVGS include the following in our Members Only membership roster? (please check each box if OK).

YOUR ADDRESS YOUR TELEPHONE NUMBER YOUR EMAIL ADDRESS

\$ ~~Free Membership~~ ~~Annual Dues for the calendar year are \$25 for an individual member or \$30 for a family membership.~~ For 2021-22 only membership. Membership includes the WVGS monthly newsletter and electronic copies of 4 issues of the quarterly bulletin *Beaver Briefs*.

\$ _____ Additional cost for *members only* for postage for 4 issues of hard copies of *Beaver Briefs* in the mail is \$10.

\$ _____ A one-time payment for Life Membership is \$250 if under age 70 or \$200 if age 70 or over. See website for information on Life Membership or pick up a form from an officer.

\$ _____ Hard copies (4 issues) of *Beaver Briefs* only, received by mail, is \$20 for non-members only.

\$ _____ Other (please identify) _____

\$ _____ **TOTAL ENCLOSED** Please make check payable to WVGS.

This information will be used to connect members through our website. Contact will be made through a third party. Your contact information will not be posted on the Members Page of our website.
 I am looking for help or need help with:

I can offer help with:

My 5 main surnames are:

Languages (other than English) that I can read are:

SIGNATURE _____ Date _____

NAME-ADDRESS-PHONE	SUN	MON	TUES	WED	THURS	FRI	SAT
Salem East LDS Family History Center 862 45th Ave NE Salem, OR 97301 / 503-371-0453	CLOSED	CLOSED	9 am-4 pm	1 pm - 8 pm	CLOSED	CLOSED	9 am-1pm Ext 1st&3rd
Salem LDS Family History Center 4550 Lone Oak Rd SE Salem, OR 97302 / 503-378-0383 ext 7	CLOSED	CLOSED	9 am-6 pm	Groups By appt.	9 am-8 pm	CLOSED	CLOSED
Oregon State Archives 800 Summer St NE Salem, OR 97310 / 503-373-0701	The Reference Room at the Oregon State Archives is closed to the public to limit the spread of the coronavirus (COVID-19). Reference requests may still be submitted using the online form. https://sos.oregon.gov/archives/Pages/order.aspx						
Salem Public Library 585 Liberty St SE, Salem, OR 97301 (503) 588-6315	Express Service for browsing and check out, holds pickup, and limited public computer use is available at Salem Public Library's Main Library, 585 Liberty ST SE. Express Service is open 11 a.m.-6 p.m. Tuesday-Saturday.						
Willamette Heritage Center Research Library 1313 Mill St SE Salem, OR 97301 / 503-585-7012	The Research Library and Archives is open on a limited basis by appointment only. Please submit your research inquiries online. Appointments will be considered only in cases where we can't provide services remotely. Reference requests may be submitted using the online form at https://www.willametteheritage.org/research/						



March 2022 Newsletter

RETURN SERVICE REQUESTED

Williamette Valley Genealogical Society
P. O. Box 2083
Salem, OR 97308-2083